



Bright Art Gallery & Cultural Centre

WINTER 2024 Newsletter

Welcome to the WINTER edition of the Bright Art Gallery Newsletter – July 2024

IMPORTANT DATES

Sat 29 Jun to Sun 14 Jul	Winter Art Exhibition
Sun 7 July at 2pm	Kay Gillis will give a talk on the Buckland Screens + afternoon tea
Sun 14 Jul 4-5pm + Mon 15 Jul 10-12	Artists pick up winter exhibits
Sun 28 July 2pm	AGM
Wed 25 Sep at 7pm	Opening Spring Exhibitions – Presentation by Jane Giblin
Thu 26 Sep – Mon 4 Nov	Spring Exhibitions
Fri 8 Nov – Thu 21 Nov	P-12 School Exhibition – including set up and take down dates
Fri 15 Nov	Entry forms in for the Summer Exhibition
Fri 29 Nov at 7pm	Opening of the Summer Exhibition & Members Christmas Function
Sat 30 Nov – Mon 27 Jan 2025	Summer Exhibition

Winter Exhibition – Alpine Artists + Permanent Collection

Open daily 10am to 4pm until Sunday 12 May at noon



Bright Art Gallery

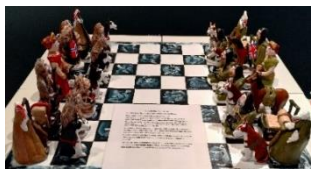
WINTER
Exhibition
29 June - 14 July 2024
Works on a 'Winter Theme' by the Alpine Artists
&
The 'Buckland Screens' and 'Mountains' from the Permanent Collection

Paintings, Photographs & 3D works by the Alpine Artists - The artist members of the Bright Art Gallery - on the theme of 'Winter' & **The Buckland Screens** ↓ + **Mountains** from the permanent collection. If you missed out last Sunday on Heather Kelly's informative Talk about the Buckland Screens and the Riots, there is another opportunity with Kay Gillis:

Sunday 7th July at 2pm, afternoon tea afterwards.



Snow Dance
Suzannah Lees



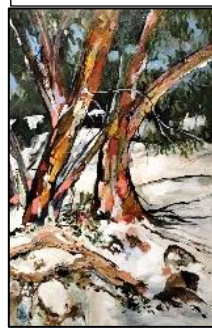
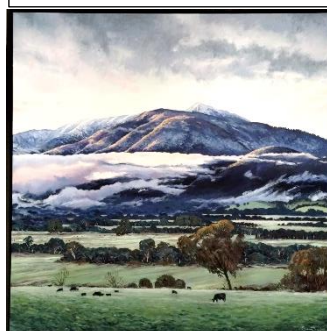
Chess Set
Race to the Pole
Clay Sculpture by
Rose Briaden

Her Majesty – Mt Bogong by
Sharon Barr

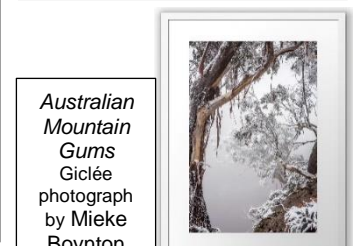
Snowgums
Christina Zey



Siberian Tiger by
Gisela Zimmer



Winter on the Otway Coast
pastel by Stephen McCall



Australian
Mountain
Gums
Giclee
photograph
by Mieke
Boynton

AGM Bright Art Gallery & Cultural Centre



Sunday 28 July at 2pm – All Members are invited to attend!

Please join us if you can, to ensure we have a quorum

Youth membership is on the agenda 😊 Afternoon tea afterwards



The Bright Art Gallery Permanent Collection has been developed for the past 62 years, and it now has 260 paintings in it. Many of these paintings were prize winners in the Autumn Art Show and are of a high quality but mostly stay hidden away in storage apart from the occasional special exhibition.



The aim of the Bright Art Gallery Committee is to display these paintings in settings where they can be seen by our community when the Gallery is not open for exhibitions. We have recently changed the display in the **Bright Library** and have paintings with an animal theme on display there. We are also working with **Alpine Health** to find walls in their facilities where people can enjoy art while visiting or being treated at an Alpine Health location.



VOLUNTEERS
The Gallery loves YOU!



Our ever-ready volunteers are stepping in to help out in the usual 3 hour shifts and their generosity is applauded. It's not the easiest time of year to fill the roster as warmer climes are calling! If any more Gallery members would like to add your names to the list, there will always be someone ready to show you. It's always interesting to see how the gallery operates "behind the scenes".

Contact **Kim** our Volunteer Coordinator on 0427 637 269 or email the gallery.



Spring Exhibitions

Thu 26 Sep to Mon 4 Nov

Dear Kate, The Vision of the Mitchell Women

by Tasmanian Artist **Jane Giblin**

&

Paintings, Photographs & 3D Work

by The Alpine Artists

Opening Night Wed 25 Sep at 7pm



Sheep hunting without a saddle
Pen & Watercolour by Jane Giblin

Alpine Artists download your entry form here:

Paintings & Photographs up to 6 entries: <https://www.brightartgallery.org.au/wp-content/uploads/Entry-form-Alpine-Artists-SPRING-2024.pdf>

3D Work, Ceramics, Glassware etc up to 10 entries:

<https://www.brightartgallery.org.au/wp-content/uploads/Entry-form-Alpine-Artists-ARTISANS-SPRING-2024.pdf>

Dear Kate, The Vision of the Mitchell Women by Jane Giblin

Jane will give a comprehensive talk & presentation about the exhibition on **Opening Night Wednesday 25 September at 7pm**. An event not to be missed! ALL WELCOME.



This exhibition unveils the artistic legacy of the Mitchell family. Explore the talents of Catherine Augusta Mitchell, her daughters Catherine Penwarne Ball, and Sarah Elizabeth Emma Mitchell, who thrived on Tasmania's east coast in the 1860s. Through their intricate drawings and paintings, they captured the essence of their daily lives and vibrant community activities. Horseback adventures led them into unfamiliar forests and along wild coastlines, resulting in their creation of a visual chronicle of their experiences.

Central to this exhibition is the remarkable collaboration between Catherine Penwarne Mitchell, or 'Dear Kate,' and her sister Sarah. Even after Dear Kate's passing in 1878, Sarah

devoted nearly seven decades to preserving their shared artistic efforts, with the invaluable support of their niece Grace Mitchell. The culmination of their dedication resulted in *The Mitchell Scrapbook*, the life-long work of these women, and a precious handmade treasure that forms the exhibition's foundation.

In the 1940s, Sarah, then in her 90s, entrusted her late sister's exquisite ink drawings to the Royal Society of Tasmania, ensuring their preservation. Today, 150 years later, we witness a collection of miniature images teeming with life, adventure, and historical significance. This exhibition pays homage to Dear Kate's drawings using 19th-century lithography and watercolour techniques. Jane Giblin, pictured above, a modern-day descendant of the extended Mitchell family, responds with these techniques, illuminating details, which share Dear Kate's wonderful artistic vision. Her work breathes new life into these cherished drawings, revealing the captivating stories and timeless spirit of the Mitchell women.



John and Kate Ball, On their wedding day 1877
Image from the Sarah Mitchell Scrapbook, Courtesy of the University of Tasmania, Special and Rare Collections, Royal Society of Tasmania, RST 32/89 "

Workshops: In association with the exhibition the artist behind the show, **Jane Giblin**, will run two workshops to share what she has learned about Kate Ball's (Mitchell) ink drawings made about the East Coast of Tasmania during the 1860s and 1870s. You will be assisted to write and illustrate your own stories in ink and nib, and watercolour. All materials will be provided.

Dates: Saturday 28 September and Saturday 2 November, both from 1.30-3pm. **Cost:** \$46 pp. Workshops are limited to a maximum of 15 people. Book at the Gallery.

There is a connection between Dear Kate and Bright; eleven months before her death at the age of 31, Kate married the Reverend John Aubrey Ball. Before they were wed in Tasmania, Kate visited him in Bright, where he lived, and during her stay she produced several drawings about the place.



In the workshop Jane will provide a short floor talk and share with you the handmade contemporary version, *The Mitchell Women: Unknown Stories*, of an archived scrapbook originally made by Kate's younger sister, Sarah. The original scrapbook, now far too fragile to travel, not only held Kate's extensive drawing collection but also Sarah's associated reflections and stories, often handwritten by her devoted niece, Grace Mitchell.

At each venue of the show's tour, community workshop participants produce work, some of which become a small contribution to the travelling scrapbook. In this way, when it returns to Tasmania in November it will carry a new era of family reflections and stories and a new connection between Bright and East Coast Tasmanian families. *Contribution to the scrapbook is entirely voluntary.*

SUMMER Exhibition 2024-25 Celebrating the Alpine Artists

Sat 30 Nov to Mon 27 Jan 2025 – Opening Fri 29 Nov 7pm

EXCITING NEWS: This year the Summer Exhibition will truly be Celebrating the Alpine Artists by making it an **AWARD EVENT**, only open to members of the Bright Art Gallery – **THE ALPINE ARTISTS**. The second exciting news item is **YOUTH Participation and AWARDS**.

PRIZES:

A Grand Acquisitive Prize of \$2000 for the best HANGING ARTWORK.

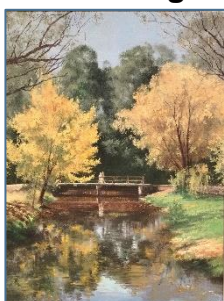
This may be any medium – works entered in section 1, 2, 3, 4, 6 and 7, if it is wall-hanging.

This prize will enable the gallery to add Gallery Members art works to the permanent collection.

All hanging artworks in the adult sections will be judged for this prize.

Section 1	Oil and Acrylic Maximum 6 entries – no more than 4 large works over 1 M ²	Adult	\$500
Section 2	Watercolour and Pastel Maximum 6 entries - no more than 4 large works over 1 M ²	Adult	\$500
Section 3	Other & Mixed Medium & Digitally Created Art Maximum 6 entries - no more than 4 large works over 1 M ²	Adult	\$500
Section 4	Photographs Maximum 6 entries - no more than 4 large works over 1 M ²	Adult	\$500
Section 5	Sculptural Works – any medium – wall-hanging or standing Maximum 6 entries - no more than 4 Large works: over 1 M ² for hanging and 2M in height.	Adult	\$500
Section 6	Glass Art Maximum 15 entries	Adult	\$300
Section 7	Ceramic Art Maximum 15 entries	Adult	\$300
Section 8	Youth Art Prize – Age 12-17 – 2 or 3 Dimensional Maximum 3 entries	Youth	\$300
Section 9	Youth Art Prize – Age 6-11 – 2 or 3 Dimensional Maximum 2 entries	Youth	\$100

Entry Forms will be sent out in **August to all Alpine Artists**.



This painting *Morses Creek Bridge, Bright* by Marie Weeks was recently kindly donated by **Enid West**.

Enid was instrumental in the earlier years of the Bright Art Gallery and devoted 18 years to developing the gallery. The painting was purchased by Enid's husband in the early 80's.

Bright Art Gallery & Cultural Centre Committee

Inc A9293R

President: Steve McCall (Autumn Art Exhibition Coordinator) **Treasurer:** Jon Lilley
Vice President: Roy Ward (Assets & Council Liaison) **Association Secretary:** Renata Armishaw
Committee: Pauline McCall (Minutes & Correspondence Secretary), Yvette Van Urk (Membership Secretary & Musical Performances), Annemarie Wiegerinck (Spring, Summer & Winter Exhibitions Coordinator & Newsletters), Kim Robinson (Volunteers Coordinator), Libby Owen-Jones (Gallery Shop Coordinator), Jenny McNaught (Musical Performances), Kay Gillis (Permanent Collection Curator), Carol Styles (Social Media), Barry Willcox, Kitty Knappstein.

Contact: manager@brightartgallery.org.au - 03 5750 1660 - PO Box 216, Bright Vic 3741
28 Mountbatten Ave Bright – www.brightartgallery.org.au

After hours phone numbers: Steve & Pauline 0429 127 444; Kim 0427 637 269; Annemarie 0413 247 237